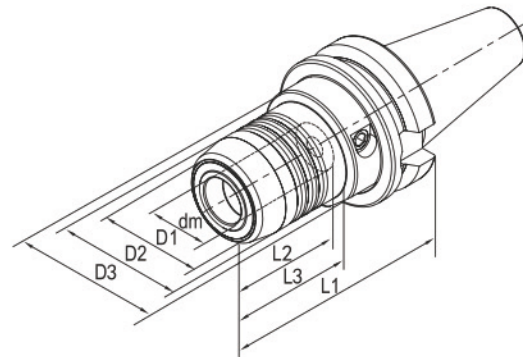
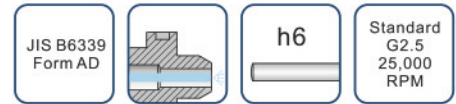


HYDRAULIC EXPANSIONS CHUCK

- Super transmitted torque for high clamping reliability.
- Radial run-out less than 3μ (system accuracy at 4x μ)
- For clamping cutting tools with cylindric shank tolerance h6
- Flexible clamping range due to use of reducing sleeve for Various shank.
- Axial length adjustment available and max. adjustment travel 10mm.
- Ideal damping characteristics, resulting in optimum surface finish, increase cutter life time and spindle protection.

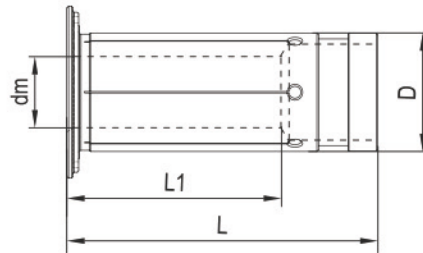


Order No.	Model	Shank	Size(mm)							Screw	Screw wrench	for Collets
			dm	D1	D2	D3	L1	L2	L3			
122-01-301	BT30-HCM06-50.8	BT30-AD	6	23	26	46	50.8	37	18	HCS005014C	TS5	-
122-01-302	BT30-HCM08-50.8	BT30-AD	8	25	28	46	50.8	37	18.5	HCS006014C	TS5	-
122-01-303	BT30-HCM10-50.8	BT30-AD	10	27	30	46	50.8	41	19	HCS008014C	TS5	-
122-01-304	BT30-HCM12-50.8	BT30-AD	12	29	32	46	50.8	46	19.5	HCS008014C	TS5	HC12
122-01-305	BT30-HCM16-90	BT30-AD	16	35	38	45	90	49	50	HCS008014C	TS5	-
122-01-306	BT30-HCM20-90	BT30-AD	20	37.5	42	45	90	51	50	HCS008014C	TS5	HC20
122-01-401	BT40-HCM06-90	BT40-AD	6	22	26	50	90	37	43	HCS005014C	TS5	-
122-01-402	BT40-HCM08-90	BT40-AD	8	24	28	50	90	37	44.5	HCS006014C	TS5	-
122-01-403	BT40-HCM10-90	BT40-AD	10	26	30	50	90	41	44.5	HCS008014C	TS5	-
122-01-404	BT40-HCM12-90	BT40-AD	12	28	32	50	90	46	44.5	HCS008014C	TS5	HC12
122-01-405	BT40-HCM16-90	BT40-AD	16	34	38	50	90	49	47.5	HCS008014C	TS5	-
122-01-406	BT40-HCM20-90	BT40-AD	20	38	42	50	90	51	47.5	HCS008014C	TS5	HC20
122-01-407	BT40-HCM25-83	BT40-AD	25	53	57	72	83	57	25.5	HCS012014C	TS6	-
122-01-408	BT40-HCM32-83	BT40-AD	32	60	63	80	83	61	25.5	HCS012014C	TS6	HC32
122-01-409	BT40-HCM14-90	BT40-AD	14	30	34	50	90	46	44.5	HCS008014C	TS5	-
122-01-410	BT40-HCM18-90	BT40-AD	18	36	40	50	90	49	47.5	HCS008014C	TS5	-
122-01-411	BT40-HCM06-150	BT40-AD	6	22	26	50	150	37	103	HCS005014C	TS5	-
122-01-412	BT40-HCM08-150	BT40-AD	8	24	28	50	150	37	104	HCS006014C	TS5	-
122-01-413	BT40-HCM10-150	BT40-AD	10	26	30	50	150	41	104	HCS008014C	TS5	-
122-01-414	BT40-HCM12-150	BT40-AD	12	28	32	50	150	46	105	HCS008014C	TS5	HC12
122-01-415	BT40-HCM14-150	BT40-AD	14	30	34	50	150	46	105	HCS008014C	TS5	-
122-01-416	BT40-HCM16-150	BT40-AD	16	34	38	50	150	49	106	HCS008014C	TS5	-
122-01-417	BT40-HCM18-150	BT40-AD	18	36	40	50	150	49	107	HCS008014C	TS5	-
122-01-418	BT40-HCM20-150	BT40-AD	20	38	42	50	150	51	107	HCS008014C	TS5	HC20
122-01-419	BT40-HCM06-200	BT40-AD	6	22	26	50	200	37	153	HCS005014C	TS5	-
122-01-420	BT40-HCM08-200	BT40-AD	8	24	28	50	200	37	154	HCS006014C	TS5	-
122-01-421	BT40-HCM10-200	BT40-AD	10	26	30	50	200	41	154	HCS008014C	TS5	-
122-01-422	BT40-HCM12-200	BT40-AD	12	28	32	50	200	46	155	HCS008014C	TS5	HC12
122-01-423	BT40-HCM14-200	BT40-AD	14	30	34	50	200	46	155	HCS008014C	TS5	-
122-01-424	BT40-HCM16-200	BT40-AD	16	34	38	50	200	49	156	HCS008014C	TS5	-
122-01-425	BT40-HCM18-200	BT40-AD	18	36	40	50	200	49	157	HCS008014C	TS5	-
122-01-426	BT40-HCM20-200	BT40-AD	20	38	42	50	200	51	157	HCS008014C	TS5	HC20
122-01-501	BT50-HCM06-90	BT50-AD	6	22	26	44.5	90	37	29.5	HCS005014C	TS5	-
122-01-502	BT50-HCM08-90	BT50-AD	8	24	28	44.5	90	37	30	HCS006014C	TS5	-
122-01-503	BT50-HCM10-90	BT50-AD	10	26	30	44.5	90	41	31	HCS008014C	TS5	-
122-01-504	BT50-HCM12-90	BT50-AD	12	28	32	44.5	90	46	34	HCS008014C	TS5	HC12
122-01-505	BT50-HCM16-90	BT50-AD	16	34	38	44.5	90	49	34	HCS008014C	TS5	-
122-01-506	BT50-HCM20-90	BT50-AD	20	38	42	44.5	90	51	34	HCS008014C	TS5	HC20
122-01-507	BT50-HCM25-90	BT50-AD	25	53	57	66	90	57	34	HCS012014C	TS6	-
122-01-508	BT50-HCM32-90	BT50-AD	32	60	64	72	90	61	34	HCS012014C	TS6	HC32
122-01-509	BT50-HCM12-150	BT50-AD	12	28	32	50	150	46	95	HCS008014C	TS5	HC12
122-01-510	BT50-HCM20-150	BT50-AD	20	38	42	50	150	51	95	HCS008014C	TS5	HC20

REDUCING SLEEVE FOR HYDRAULIC EXPANSIONS CHUCK

h6

- Radial run-out less than 5 μ .
- For clamping cutting tools with cylindric shank tolerance h6.



Order No.	Model	Size (mm)			
		dm	D	L1	L
100-01-001	HC12-3	3	12	16.5	47.5
100-01-002	HC12-4	4	12	16.5	47.5
100-01-003	HC12-5	5	12	16.5	47.5
100-01-004	HC12-6	6	12	24	47.5
100-01-005	HC12-8	8	12	25.5	47.5
100-01-006	HC20-3	3	20	17.5	52.5
100-01-007	HC20-4	4	20	17.5	52.5
100-01-008	HC20-5	5	20	17.5	52.5
100-01-009	HC20-6	6	20	25.5	52.5
100-01-010	HC20-7	7	20	28	52.5
100-01-011	HC20-8	8	20	28	52.5
100-01-012	HC20-9	9	20	32.5	52.5
100-01-013	HC20-10	10	20	32.5	52.5
100-01-014	HC20-11	11	20	36	52.5
100-01-015	HC20-12	12	20	36	52.5
100-01-016	HC20-13	13	20	36.5	52.5
100-01-017	HC20-14	14	20	37	52.5
100-01-018	HC20-15	15	20	37	52.5
100-01-019	HC20-16	16	20	37.5	52.5
100-01-020	HC32-6	6	32	25.5	63.5
100-01-021	HC32-8	8	32	27.5	63.5
100-01-022	HC32-10	10	32	30.5	63.5
100-01-023	HC32-12	12	32	30.5	63.5
100-01-024	HC32-14	14	32	32.5	63.5
100-01-025	HC32-16	16	32	40.5	63.5
100-01-026	HC32-18	18	32	40.5	63.5
100-01-027	HC32-20	20	32	40.5	63.5
100-01-028	HC32-25	25	32	48.5	63.5

HYDRAULIC EXPANSIONS CHUCK SET

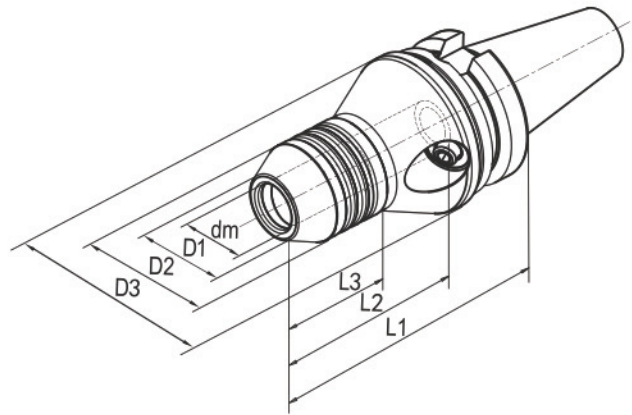
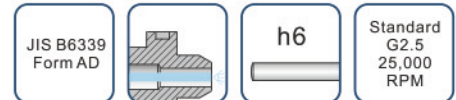
- each set including 1pc each of BT40-HCM20-90 hydraulic expansion chuck, HC20-6, HC20-8, HC20-10, HC20-12, HC20-16 (internal dia: 6, 8, 10, 12, 16mm) reducing sleeve and screw wrench, pack in strong aluminium box.



ORDER NO.122-01-S04

PRECISION HYDRAULIC EXPANSIONS CHUCK

- Used on CNC tool grinding machine for grinding/sharpening of drill, reamer, end mill etc.
- High precision and Radial Run-out not more than 2μ at 4d checking point.
- Super transmitted torque for high clamping reliability.
- For clamping cylinderic shank tolerance h6
- Can be operated frequently long time and keep good repeatability.



Order No.	Modle	Shank	Size(mm)							Wrench	for Collets
			dm	D1	D2	D3	L1	L2	L3		
122-01-001	BT40-HCM12-110M	BT40-AD	12	21.5	36.5	60	110	80	47	TS5	HC12..M
122-01-002	BT40-HCM20-110M	BT40-AD	20	28	42	67	110	85	47	TS5	HC20..M

PRECISION REDUCING SLEEVE FOR HYDRAULIC CHUCK

- Radial run-out less than 3μ .
- Used for grinding/sharpening of drill, reamer, end mill etc.
- For clamping cutting tools with cylinderic shank tolerance h6



Order No.	Modle	Size (mm)			
		dm	D	L1	L
100-01-101	HC12-3M	3	12	16.5	47.5
100-01-102	HC12-4M	4	12	16.5	47.5
100-01-103	HC12-5M	5	12	16.5	47.5
100-01-104	HC12-6M	6	12	24	47.5
100-01-105	HC12-8M	8	12	25.5	47.5
100-01-106	HC20-3M	3	20	17.5	52.5
100-01-107	HC20-4M	4	20	17.5	52.5
100-01-108	HC20-5M	5	20	17.5	52.5
100-01-109	HC20-6M	6	20	25.5	52.5
100-01-110	HC20-7M	7	20	28	52.5
100-01-111	HC20-8M	8	20	28	52.5
100-01-112	HC20-9M	9	20	32.5	52.5
100-01-113	HC20-10M	10	20	32.5	52.5
100-01-114	HC20-11M	11	20	36	52.5
100-01-115	HC20-12M	12	20	36	52.5
100-01-116	HC20-13M	13	20	36.5	52.5
100-01-117	HC20-14M	14	20	37	52.5
100-01-118	HC20-15M	15	20	37	52.5
100-01-119	HC20-16M	16	20	37.5	52.5
100-01-120	HC32-6M	6	32	25.5	63.5
100-01-121	HC32-8M	8	32	27.5	63.5
100-01-122	HC32-10M	10	32	30.5	63.5
100-01-123	HC32-12M	12	32	30.5	63.5
100-01-124	HC32-14M	14	32	32.5	63.5
100-01-125	HC32-16M	16	32	40.5	63.5
100-01-126	HC32-18M	18	32	40.5	63.5
100-01-127	HC32-20M	20	32	40.5	63.5
100-01-128	HC32-25M	25	32	48.5	63.5

